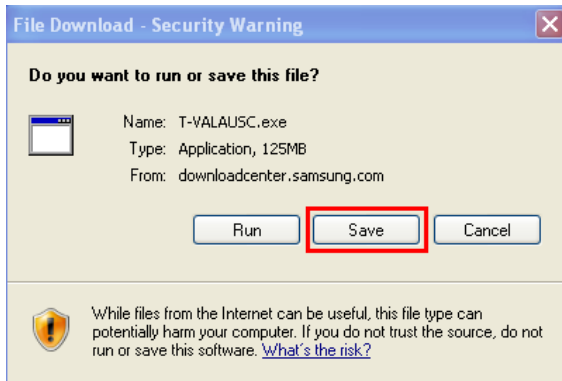




How to Update the Firmware on the TV via USB

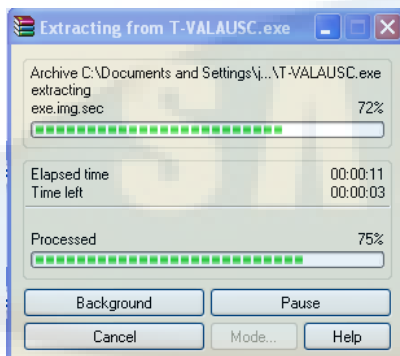
To update the firmware on the TV via the USB port, follow these steps:

1. Download the latest firmware for the TV from <http://www.samsung.com/us/support/>.
2. Save the file to a familiar location.



Important: Do not rename the file when you save it.

3. Using a program like Winzip extract the files. You will now have a folder containing the extracted files.



Important: Do not rename the extracted folder.

4. Copy/Cut and paste this folder to the root drive of a USB device, like a thumb drive.



Note: The USB device does not have to be empty just have enough space for the file.

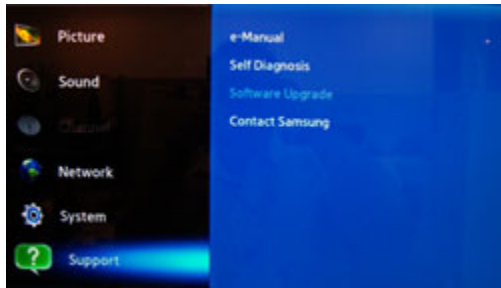
5. Plug the USB device into the USB port on the TV.



6. Power on the TV, and then press the **MENU** button on the TV remote control. [*The Main Menu appears*]



- Using the up or down arrow buttons on the remote select **'Support'**, and then press **ENTER**. *[The selection bar moves from the left side of the menu to the right side of the menu]*



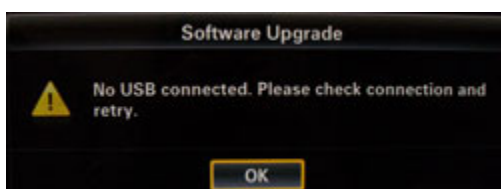
- Using the up or down arrow buttons on the remote select **'Software Upgrade'**, and then press **ENTER**. *[The Main Menu disappears and the Software Update Menu pops-up]*



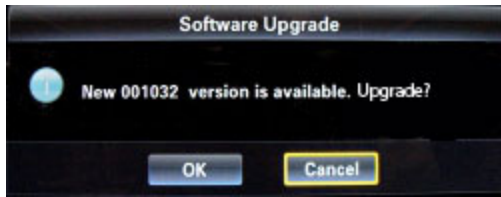
- By default **'By USB'** will be selected, press **ENTER**. *[The Software Update menu disappears while it searches the USB device for an update]*



Important: If the TV does not recognize the USB device that is connected you will receive the following message: 'No USB connected...' If you receive this message try using a different USB device.



- Using the left or right arrow buttons on the remote select **'OK'**, and then press **ENTER**. *[A progress bar appears]*



11. When the update has finished, read the update warning and using the left or right arrow buttons on the remote select '**OK**', and then press **ENTER**.



12. The TV's Firmware will be updated and the TV will reset. When the TV turns back on you will need to go through the Plug & Play setup again.

Note: If no new firmware is available on the USB device the TV is up-to-date with the latest firmware.

A large, faint, light blue watermark of the Samsung logo is centered on the page. The word "SAMSUNG" is written in a bold, sans-serif font within an oval shape.